

BACKBOX SCHEDULE

X	XXX	WALL, CATWALK, OR ABOVE CEILING	NOTES: 1.) MOUNTING LOCATIONS ARE NOTED TO THE BOTTOM OF THE BACK BOX OR ARE NOTED ON DRAWINGS. ALL BOXES ARE RECESSED FOR FLUSH MOUNTING (TO FINISHED WALL/CEILING +07/-1/8") UNLESS OTHERWISE NOTED. REFER TO AV DRAWINGS FOR EXACT MOUNTING LOCATIONS. 2.) AC POWER PROVIDE UNDER DIV. 16 SHALL BE ISOLATED GROUND FROM A SINGLE PHASE OF POWER FOR THE ENTIRE AV SYSTEM. 3.) COORDINATE ALL EQUIPMENT AND BACKBOX LOCATIONS WITH ELECTRICAL AND ARCHITECTURAL DRAWINGS. 4.) SIZES ARE NEMA HWXWD OR STANDARD GANG	X	XXX	FLUSH IN CEILING	
X	XXX	FLUSH IN FLOOR		X	XXX	FLUSH IN FLOOR	
X	XXX	FLUSH IN FLOOR		X	XXX	FLUSH IN FLOOR	
SYMBOL	FUNCTION (PANEL NAME)	BOX SIZE	MOUNTING LOCATION	SYMBOL	FUNCTION (PANEL NAME)	BOX SIZE	MOUNTING LOCATION
AVJB	AUDIO VISUAL SYSTEM J-BOX	SIZE PER NEMA, TYP 12 x 12 x 4	BEHIND AV RACK	AVRACK	AV RACK	PER SPEC	FLOOR, AS SHOWN
KJB	SYSTEM JUNCTION BOX (X) DENOTES SYSTEM S+SPEAKER, M=MICROPHONE, V=VIDEO	SIZE PER NEMA, TYP 12 x 12 x 4	BEHIND AV RACK	VC	VOLUME CONTROL	4 SQ DEEP BOX WITH SINGLE GANG RING	MOUNT AT 56" AFF OR AS DIRECTED ON PLAN
WP1	SYSTEM WALL PLATE FOR INPUTS TO OR OUTPUTS FROM AUDIO VISUAL SYSTEMS	SEE SPECIFICATION	MOUNT AT 18" AFF	VP	VIDEO PROJECTOR LOCATION	CHIEF	AT CEILING
WP2	SYSTEM WALL PLATE FOR INPUTS TO OR OUTPUTS FROM AUDIO VISUAL SYSTEMS	SEE SPECIFICATION	MOUNT AT 18" AFF OR AS DIRECTED	B	HI BAY CEILING SPEAKER	PROVIDED BY AV CONTRACTOR	FLUSH IN CEILING AS DIRECTED ON PLAN
WP3	SYSTEM WALL PLATE FOR INPUTS TO OR OUTPUTS FROM AUDIO VISUAL SYSTEMS	NEMA FLUSH COVER 12 x 12 x 4 J-BOX	MOUNT AT 18" AFF OR OUTLET HEIGHT	S	CEILING SPEAKER	PROVIDED BY AV CONTRACTOR	FLUSH IN CEILING AS DIRECTED ON PLAN
WP4	SYSTEM WALL PLATE FOR INPUTS TO OR OUTPUTS FROM AUDIO VISUAL SYSTEMS	4 SQ DEEP BOX WITH SINGLE GANG RING	MOUNT OF UPPER RAIL OF CATWALK REAR SIDE	S	LOUDSPEAKER WALL MOUNT TYPE	4 SQ DEEP BOX WITH SINGLE GANG RING	MOUNT AT 8" AFF OR AS DIRECTED ON PLAN
WP5	SYSTEM WALL PLATE FOR INPUTS TO OR OUTPUTS FROM AUDIO VISUAL SYSTEMS	3-GANG DEEP BOX WITH 3 GANG RING	MOUNT AT 18" AFF OR AT OUTLET HEIGHT	S1	LOUDSPEAKER WALL MOUNT TYPE 1	4 SQ DEEP BOX WITH SINGLE GANG RING	MOUNT AT 8" AFF OR AS DIRECTED ON PLAN
WP6	SYSTEM WALL PLATE FOR INPUTS TO OR OUTPUTS FROM AUDIO VISUAL SYSTEMS	3-GANG DEEP BOX WITH 3 GANG RING	MOUNT AT 18" AFF OR OUTLET HEIGHT	S2	LOUDSPEAKER WALL MOUNT TYPE 2	4 SQ DEEP BOX WITH SINGLE GANG RING	MOUNT AT 8" AFF OR AS DIRECTED ON PLAN
WP7	SYSTEM WALL PLATE FOR INPUTS TO OR OUTPUTS FROM AUDIO VISUAL SYSTEMS	4 SQ DEEP BOX WITH 2 GANG RING	MOUNT FLUSH IN STEP WITH BOTTOM SEAT	S3	LOUDSPEAKER WALL MOUNT TYPE 3	4 SQ DEEP BOX WITH SINGLE GANG RING	MOUNT AT LIGHTING GRID IN CEILING
WP8	SYSTEM WALL PLATE FOR INPUTS TO OR OUTPUTS FROM AUDIO VISUAL SYSTEMS	3-GANG DEEP BOX WITH 3 GANG RING	MOUNT AT 18" AFF OR OUTLET HEIGHT	SUB	SUBWOOFER	4 SQ DEEP BOX WITH SINGLE GANG RING	MOUNT UNDER STAGE
WP9	SYSTEM WALL PLATE FOR INPUTS TO OR OUTPUTS FROM AUDIO VISUAL SYSTEMS	3-GANG DEEP BOX WITH 3 GANG RING	MOUNT T 18" OR OUTLET HEIGHT	RC	REMOTE CONTROL	4 SQ DEEP BOX WITH 2 GANG RING	MOUNT AT 40" AFF OR SWITCH HEIGHT
CAM	CAMERA LOCATION	4 SQ DEEP BOX WITH 2 GANG RING	MOUNT AT --	M1	RECORDING MICROPHONE CEILING MOUNTED	4 SQ DEEP BOX WITH SINGLE GANG RING	FLUSH IN CEILING AS DIRECTED ON PLAN
IRC	INFRARED CAMERA CAMERA LOCATION	4 SQ DEEP BOX WITH 2 GANG RING	MOUNT ON BALCONY FACE OR AS DIRECTED	FB1	FLOOR BOX (NUMBER INDICATES CONNECTOR OR CABLE TERMINATIONS REQUIRED, SEE AV--)	FSR FL500P WITH POUR BOX AND COVER	MOUNT AS DIRECTED ON PLANS
LDF	LOUDSPEAKER DOWN FILL	4 SQ DEEP BOX WITH 2 GANG RING	MOUNT AT CEILING AS DIRECTED ON PLANS	FB2	FLOOR BOX (NUMBER INDICATES CONNECTOR OR CABLE TERMINATIONS REQUIRED, SEE AV--)	FSR FL500P WITH POUR BOX AND COVER	MOUNT AS DIRECTED ON PLANS
LFX	LOUDSPEAKER EFFECTS	4 SQ DEEP BOX WITH SINGLE GANG RING	MOUNT AT 18" AFF OR AS DIRECTED ON PLAN	FB3	FLOOR BOX (NUMBER INDICATES CONNECTOR OR CABLE TERMINATIONS REQUIRED, SEE AV--)	FSR FL500P WITH POUR BOX AND COVER	MOUNT AS DIRECTED ON PLANS
LAX	LOUDSPEAKER LINE ARRAY	NEMA 8 x 8 x 4	MOUNT TO STRUCTURAL BEAM AS DIRECTED	FB4	FLOOR BOX (NUMBER INDICATES CONNECTOR OR CABLE TERMINATIONS REQUIRED, SEE AV--)	FSR FL500P WITH POUR BOX AND COVER	MOUNT AS DIRECTED ON PLANS
LS	LOUDSPEAKER CLUSTER	4 SQ DEEP BOX WITH 2 GANG RING	MOUNT AT 25" AFF STAGE OPENING	FB5	FLOOR BOX (NUMBER INDICATES CONNECTOR OR CABLE TERMINATIONS REQUIRED, SEE AV--)	FSR FL500P WITH POUR BOX AND COVER	MOUNT AS DIRECTED ON PLANS
LS1	LOUDSPEAKERS	4 SQ DEEP BOX WITH SINGLE GANG RING	MOUNT AT 30" AFF STAGE OPENING	FB6	FLOOR BOX (NUMBER INDICATES CONNECTOR OR CABLE TERMINATIONS REQUIRED, SEE AV--)	FSR FL500P WITH POUR BOX AND COVER	MOUNT AS DIRECTED ON PLANS
MIX	ALTERNATE MIX LOCATION FOR AUDIO MIXING CONSOLE	--	MOUNT UNDER SEAT FRWD OF CROSS ISLE	⌕	QUAD OUTLET IN FLOOR BOX	PER NEC	FLUSH IN FLOOR
MON	IR MONITOR LOCATION	4 SQ DEEP BOX WITH 2 GANG RING	MOUNT AT 56" AFF OR AS DIRECTED ON PLAN	⌕	QUAD POWER OUTLET FLUSH WITH CEILING	PER NEC	FLUSH WITH CEILING
PC(X)	PRODUCTION INTERCOM BELT PACK STATION	(X) DENOTES J-BOX SIZE (1,2, OR 4G)	MOUNT AT 18" AFF OR AS DIRECTED ON PLAN	⌕	DUPLEX POWER OUTLET IN WALL BOX	PER NEC	18" AFF

WIRE LEGEND

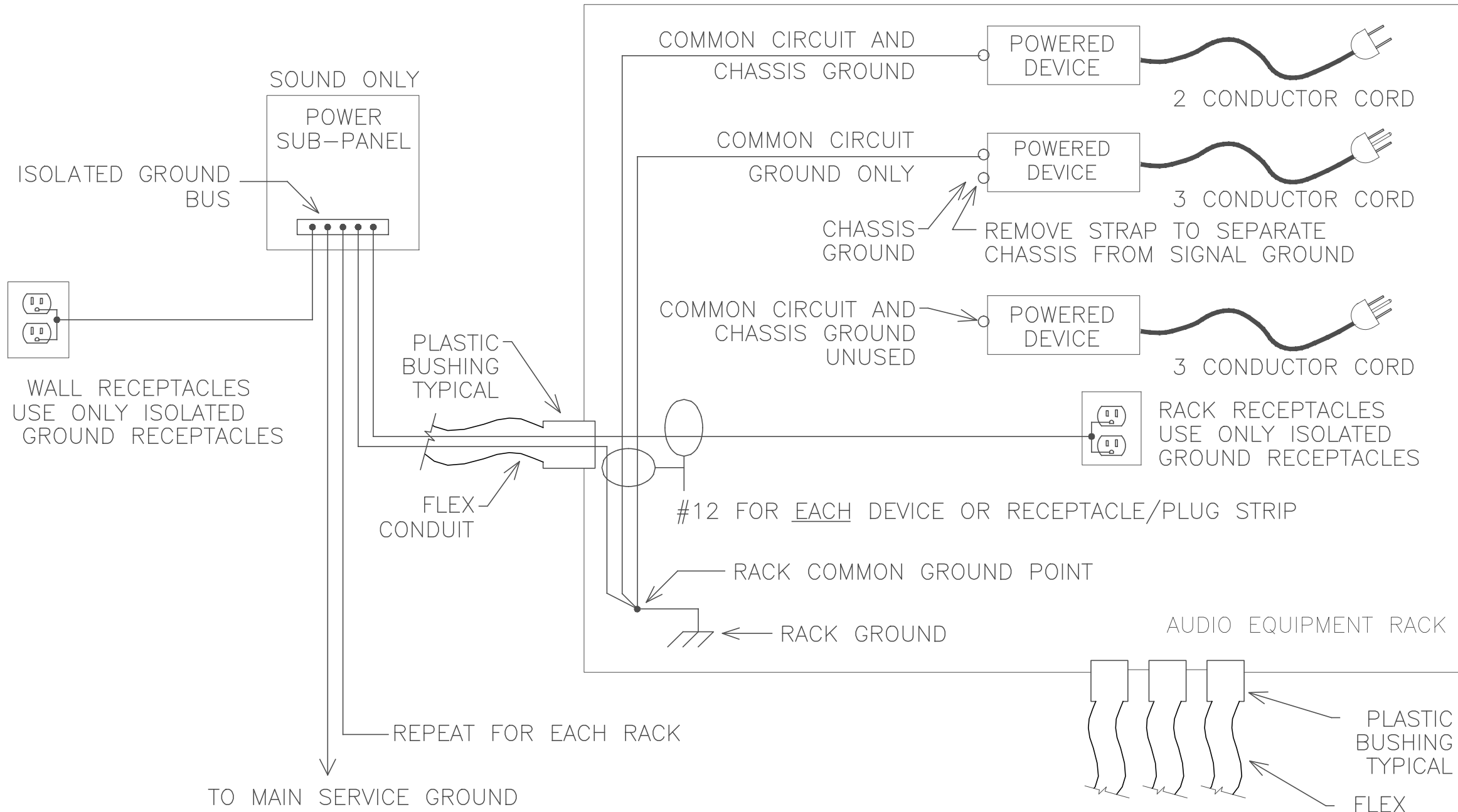
TYPE	QTY	DESCRIPTION	MANUFACTURER	PART NUMBER	CONDUCTORS
AD	X	AUDIO (DIGITAL)	BELDEN	1800B	1 PR W/SHLD
AL	X	AUDIO (LINE)	BELDEN	9451	1 PR W/SHLD
AM	X	AUDIO (MICROPHONE)	BELDEN	9451	1 PR W/SHLD
SDI	X	DIGITAL VIDEO	BELDEN	1505A	RG59/20
CS	X	CONTROL (SERIAL)	BELDEN	9451	1 PR W/SHLD
CR	X	CONTROL (IR)	BELDEN	9451	1 PR W/SHLD
CG	X	CONTROL (GENERAL)	BELDEN	9455	9 COND 20 GA
D	X	DATA	GENSPEED	6500	UTP SHLD CAT6
IM	X	PRODUCTION INTERCOM	WEST PENN	D-510	2 PR W/SHLD
P	X	LOW VOLTAGE POWER	BELDEN	8461	18/2
R	X	RGBHV 5 WIRE	BELDEN	7789A	5 WIRE HI RES
SL	X	SPEAKER (8 OHM) LONG	WEST PENN	C-210	10/2
SH	X	SPEAKER (8 OHM) SHORT	WEST PENN	227	12/2
SZ	X	SPEAKER (70 VOLT)	WEST PENN	225	16/2
T	X	TELEPHONE/DATA	BELDEN	1700A	4 PR CAT 5
V	X	COMPOSITE VIDEO	BELDEN	1694A	RG-6/U
VGA	X	VGA COMPUTER	WEST PENN	5CRGB	5 COAX

GENERAL INSTALLATION NOTES

THE CATEGORY AV DRAWINGS INDICATE INFRASTRUCTURE ONLY INCLUDING CONDUIT, PULL-BOXES, BACK BOXES COLLECTOR BOXES, AND/OR TERMINAL CABINETS.

AC POWER FOR THE A/V SYSTEMS TO BE PROVIDED BY ELECTRICAL CONTRACTOR PER DIVISION 16 IN ACCORDANCE WITH PROJECT DRAWINGS AND SPECIFICATIONS.

- AV CONDUIT SYSTEM:
 - ALL CONDUIT, WIREWAYS, PULL BOXES, BACK BOXES, COLLECTOR BOXES, AND ANCILLARY FITTINGS, CONNECTORS, AND MOUNTING ACCESSORIES ASSOCIATED WITH THE AV INFRASTRUCTURE TO BE INSTALLED PER DIVISION 16.
 - USE ALL FERROUS METAL CONDUIT. NO PVC UNLESS NOTED.
 - IN EACH CONDUIT RUN BETWEEN SUCCESSIVE BACK BOXES AND PULL BOXES, INSTALL A LENGTH OF YELLOW PULL LINE. PULL LINE SHALL HAVE SEQUENTIAL NUMBERING AT EACH ONE FOOT MARK.
 - REFER TO A/V SPECIFICATION FOR WIRE TYPES. REFER TO THE SINGLE LINE DRAWINGS FOR QUANTITIES.
 - PULL BOXES ARE NOT SHOWN ON THE RISERS, BUT MUST BE INSTALLED AFTER EACH 270 DEGREES OF BEND. EVERY 50 FEET OF STRAIGHT CONDUIT LENGTH SHALL BE CONSIDERED EQUIVALENT TO 90 DEGREES OF CONDUIT BEND.
 - TERMINATE ALL CONDUITS IN BACK BOXES, COLLECTOR BOXES, OR WIREWAYS AS SHOWN ON DRAWINGS. THE ELECTRICAL CONTRACTOR SHALL PROVIDE PLASTIC OR RUBBER BUSHINGS AS EDGE PROTECTION WHEN CONDUITS TERMINATE AT WIREWAYS AS SHOWN. EXPOSED CONDUIT EDGES ARE UNACCEPTABLE.
 - THE ELECTRICAL CONTRACTOR SHALL INCREASE THE SIZE OF BOX KNOCKOUTS AS REQUIRED AND PROVIDE APPROPRIATE FITTINGS, CONNECTORS, AND MOUNTING ACCESSORIES FOR A COMPLETE INSTALLATION IN COMPLIANCE WITH DIVISION 16.
 - RACKS TO BE PROVIDED BY ELECTRICAL CONTRACTOR PER DIVISION 16 IF INDICATED ON DRAWINGS. TAKE CARE TO ISOLATE ALL CONDUITS FROM THE TECHNICAL GROUND SYSTEM. BE SURE ALL CONDUITS ENTERING THE RACKS ARE INSULATED FROM THE RACKS.
 - ELECTRICAL CONTRACTOR SHALL DEMONSTRATE CONTINUITY OF ALL CONDUITS BY PASSING A MOUSE OR PLUG OF APPROPRIATE SIZE THROUGH EACH CONDUIT RUN.
 - ELECTRICAL CONTRACTOR SHALL MAKE AVAILABLE A FIELD REPRESENTATIVE FOR THE INSTALLER OF THE A/V EQUIPMENT DURING THE A/V INSTALLATION.
 - LEAVE NO CONDUIT ENTERING RACKS FROM TOP AND/OR SIDES EXPOSED TO FRONT VIEW OF RACKS. PLACE TRIM OR PANELS TO HIDE CONDUIT RUNS FOR A NEAT APPEARANCE.
 - REFER TO ARCHITECTURAL DRAWINGS FOR CONDUIT ROUTING INFORMATION. WHERE CONDUIT IS TO BE SURFACE RUN, THE CONTRACTOR SHALL FINISH THE CONDUIT TO MATCH THE WALL FINISH.
 - ALL NEMA STYLE BACKBOXES ARE TYPE I, INDOOR, SCREW COVER ENCLOSURES UNLESS OTHERWISE INDICATED ON THE DRAWINGS.
- BACK BOX LOCATIONS AND MOUNTING:
 - REFER TO ARCHITECTURAL DRAWINGS FOR EXACT MOUNTING LOCATIONS OF ALL BACK BOXES.
 - CONTRACTOR SHALL VERIFY LOCATION OF ALL BACK BOXES WITH OWNER'S REPRESENTATIVE IN THE FIELD.
 - ALL BOXES SHALL HAVE A BLANK COVER PLATE WITH THE STENCILED AV BACK BOX LABEL PAINTED ON THE INSIDE OF THE COVER PLATE FOR IDENTIFICATION.
 - COORDINATE ALL FINISHES WITH ARCHITECT. SUBMIT SAMPLE OF FINISHED PANEL TO ARCHITECT FOR REVIEW AND APPROVAL.



- ALL GROUND LINES MEET AT ONE POINT WITHIN EACH EQUIPMENT RACK.
- DO NOT BUS GROUND LINES EXCEPT AS SHOWN.
- DO NOT CONNECT ELECTRICAL BOX OR CONDUIT TO PIN #1 OR CABLE SHIELD AT RECEPTACLES.
- ISOLATED GROUND RECEPTACLES TYPICAL FOR ALL POWER RECEPTACLES IN SOUND EQUIPMENT AREAS.
- ISOLATE ALL CONDUIT FROM EQUIPMENT RACKS USING PLASTIC BUSHINGS OR OTHER MEANS.
- ISOLATE EACH RACK FROM THE OTHER RACKS, BOLT TOGETHER WITH PLASTIC BOLTS
- ALL GROUND CONDUCTORS INSULATED COPPER OF GAUGE INDICATED.

1 POWER GROUNDING DETAIL
SCALE: NO SCALE

SERA

ARCHITECTURE
URBAN DESIGN + PLANNING
INTERIOR DESIGN

338 NW 5TH AVENUE
PORTLAND OREGON 97209
P: 503.445.7312
F: 503.445.7395
SERAADF.COM

LISTEN ACOUSTICS
404 NW 10TH AVE
SUITE 200
PORTLAND OR 97209
503-241-5255

ERB MEMORIAL UNION - ADDITION & RENOVATION

PACKAGE 4

UNIVERSITY OF OREGON
13TH AVENUE & UNIVERSITY STREET

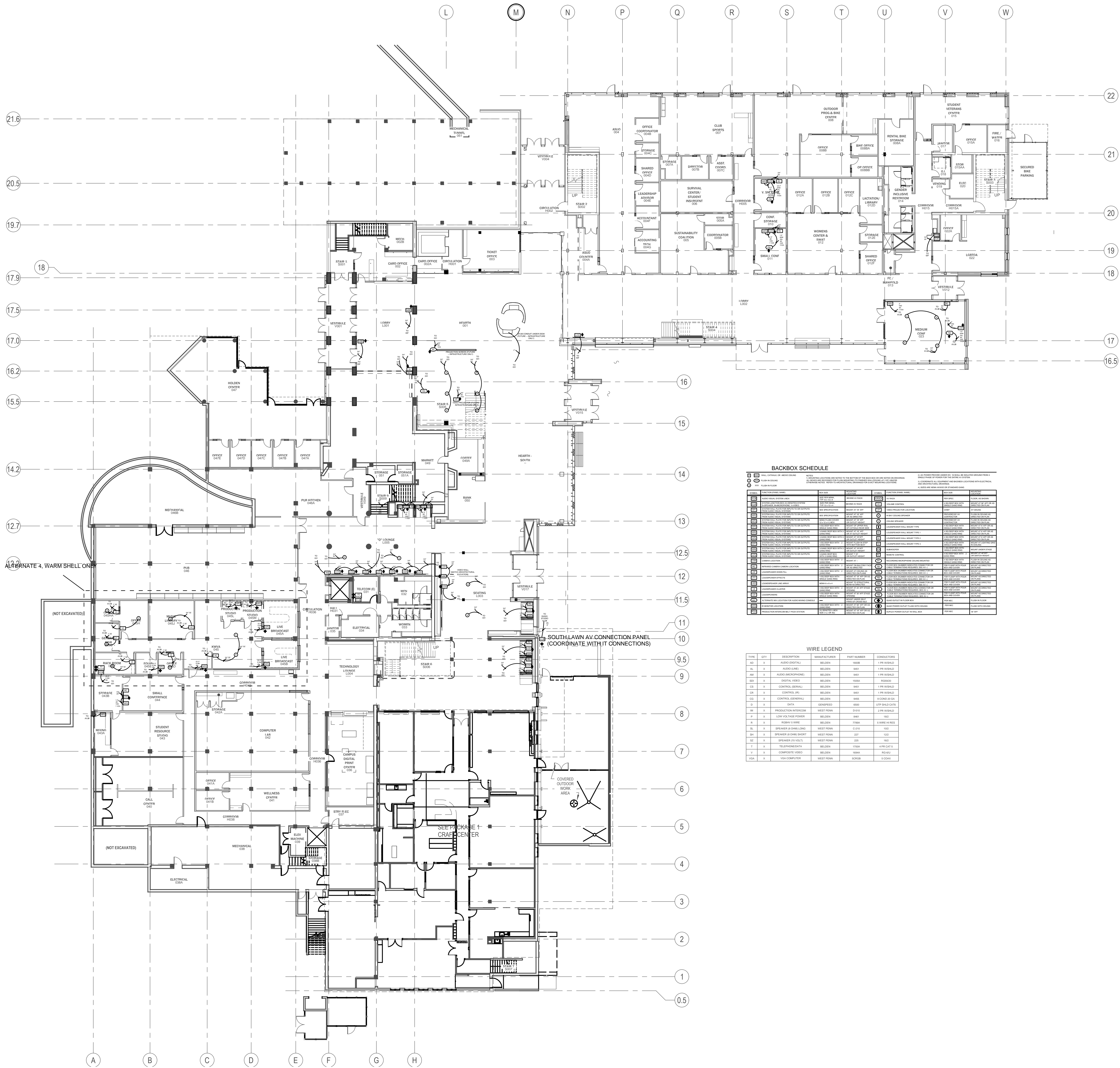
REVISIONS

CHECKED BY: 2014.08.01
ISSUE DATE: 11045
PROJECT NO.:

AV GENERAL

AV001

These drawings and their content are the property of SERA Architects, Inc. and are to be utilized on this project. Reproduction of any part of this material, without the express written permission of SERA Architects, Inc. is prohibited. SERA ARCHITECTS COPYRIGHT 2012



BACKBOX SCHEDULE									
SYMBOL	DESCRIPTION	QUANTITY	MANUFACTURER	MODEL	NOTES	SYMBOL	DESCRIPTION	QUANTITY	MANUFACTURER
1	1/2\"	1	1/2\"	1/2\"	1/2\"	1	1/2\"	1	1/2\"
2	1/2\"	1	1/2\"	1/2\"	1/2\"	2	1/2\"	1	1/2\"
3	1/2\"	1	1/2\"	1/2\"	1/2\"	3	1/2\"	1	1/2\"
4	1/2\"	1	1/2\"	1/2\"	1/2\"	4	1/2\"	1	1/2\"
5	1/2\"	1	1/2\"	1/2\"	1/2\"	5	1/2\"	1	1/2\"
6	1/2\"	1	1/2\"	1/2\"	1/2\"	6	1/2\"	1	1/2\"
7	1/2\"	1	1/2\"	1/2\"	1/2\"	7	1/2\"	1	1/2\"
8	1/2\"	1	1/2\"	1/2\"	1/2\"	8	1/2\"	1	1/2\"
9	1/2\"	1	1/2\"	1/2\"	1/2\"	9	1/2\"	1	1/2\"
10	1/2\"	1	1/2\"	1/2\"	1/2\"	10	1/2\"	1	1/2\"
11	1/2\"	1	1/2\"	1/2\"	1/2\"	11	1/2\"	1	1/2\"
12	1/2\"	1	1/2\"	1/2\"	1/2\"	12	1/2\"	1	1/2\"
13	1/2\"	1	1/2\"	1/2\"	1/2\"	13	1/2\"	1	1/2\"
14	1/2\"	1	1/2\"	1/2\"	1/2\"	14	1/2\"	1	1/2\"
15	1/2\"	1	1/2\"	1/2\"	1/2\"	15	1/2\"	1	1/2\"
16	1/2\"	1	1/2\"	1/2\"	1/2\"	16	1/2\"	1	1/2\"
17	1/2\"	1	1/2\"	1/2\"	1/2\"	17	1/2\"	1	1/2\"
18	1/2\"	1	1/2\"	1/2\"	1/2\"	18	1/2\"	1	1/2\"
19	1/2\"	1	1/2\"	1/2\"	1/2\"	19	1/2\"	1	1/2\"
20	1/2\"	1	1/2\"	1/2\"	1/2\"	20	1/2\"	1	1/2\"
21	1/2\"	1	1/2\"	1/2\"	1/2\"	21	1/2\"	1	1/2\"
22	1/2\"	1	1/2\"	1/2\"	1/2\"	22	1/2\"	1	1/2\"

WIRE LEGEND				
TYPE	QTY	DESCRIPTION	MANUFACTURER	PART NUMBER
AD	X	AUDIO (DIGITAL)	BEULDEN	15006
AL	X	AUDIO (LINE)	BEULDEN	8401
AM	X	AUDIO (MICROPHONE)	BEULDEN	8401
BN	X	DIGITAL VIDEO	BEULDEN	15004
CS	X	CONTROL (SERIAL)	BEULDEN	8401
CR	X	CONTROL (IR)	BEULDEN	8401
CS	X	CONTROL (GENERAL)	BEULDEN	8401
D	X	DATA	BEULDEN	8401
DM	X	PRODUCTION INTERCOM	WEST PENS	2415
P	X	LOW VOLTAGE POWER	BEULDEN	8401
R	X	RGBV 3 WIRE	BEULDEN	15004
SL	X	SPEAKER (2 CH. LINE)	WEST PENS	2415
SH	X	SPEAKER (2 CH. HORN)	WEST PENS	2415
ST	X	SPEAKER (2 CH. TWT)	WEST PENS	2415
T	X	TELEPHONE DATA	BEULDEN	15004
V	X	COMPOSITE VIDEO	BEULDEN	15004
VGA	X	VGA COMPUTER	WEST PENS	2415

SERA

ARCHITECTURE
URBAN DESIGN + PLANNING
INTERIOR DESIGN

338 NW 5TH AVENUE
PORTLAND OREGON 97209
P: 503.445.7372
F: 503.445.7395
SERAPDX.COM

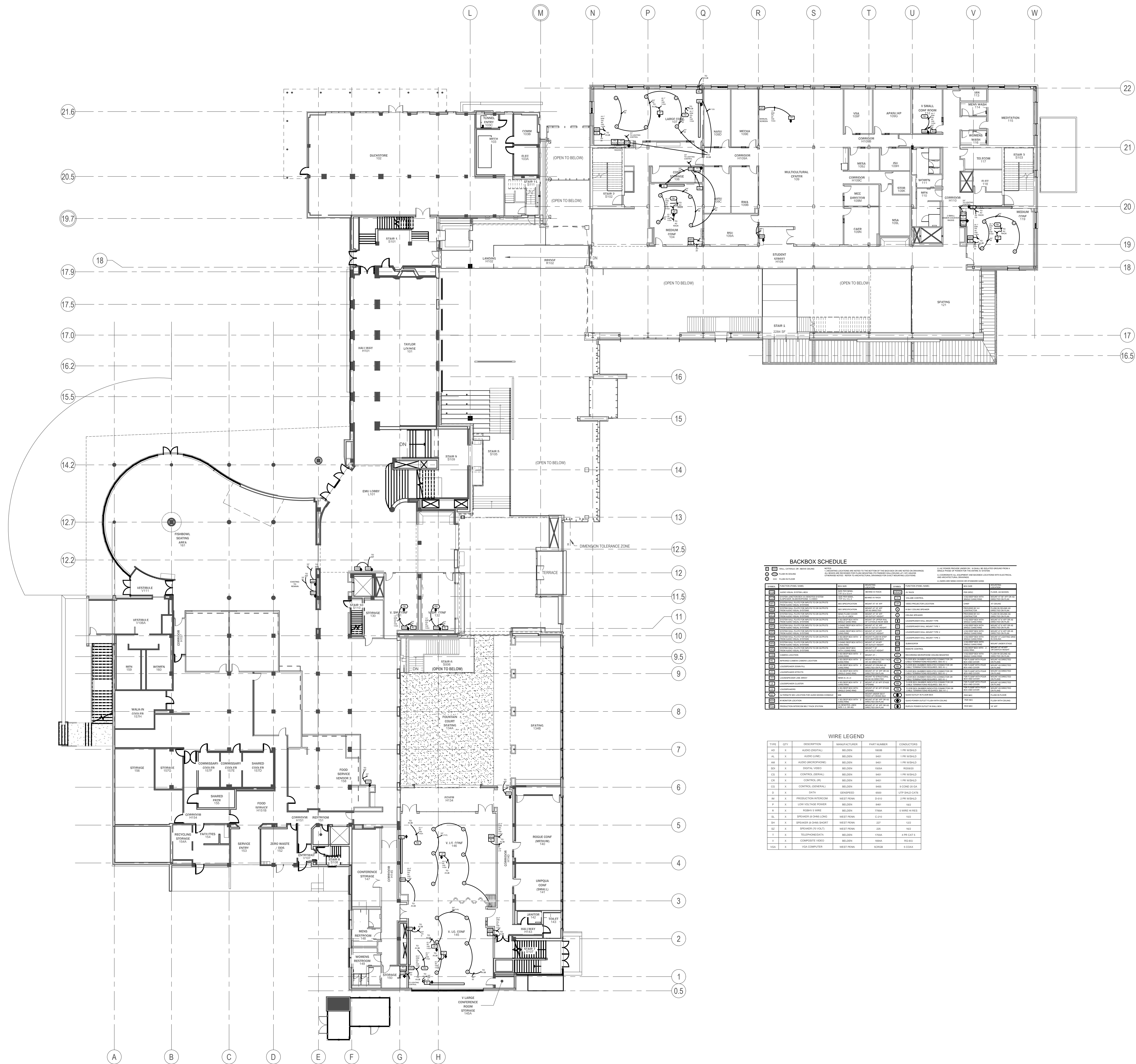
LISTEN ACOUSTICS
404 NW 10TH AVE
SUITE 200
PORTLAND OR 97209
503-241-5255

ERB MEMORIAL UNION - ADDITION & RENOVATION
PACKAGE 4
UNIVERSITY OF OREGON
13TH AVENUE & UNIVERSITY STREET

100% CONSTRUCTION DOCUMENTS

CHECKED BY: 2014.08.01
ISSUE DATE:
PROJECT NO.: 11045

AV GROUND FLOOR
AV100



BACKBOX SCHEDULE									
SYMBOL	FUNCTION	DESCRIPTION	MANUFACTURER	PART NUMBER	CONNECTIONS	SYMBOL	FUNCTION	DESCRIPTION	MANUFACTURER
1	1.0	1.0	1.0	1.0	1.0	1	1.0	1.0	1.0
2	2.0	2.0	2.0	2.0	2.0	2	2.0	2.0	2.0
3	3.0	3.0	3.0	3.0	3.0	3	3.0	3.0	3.0
4	4.0	4.0	4.0	4.0	4.0	4	4.0	4.0	4.0
5	5.0	5.0	5.0	5.0	5.0	5	5.0	5.0	5.0
6	6.0	6.0	6.0	6.0	6.0	6	6.0	6.0	6.0
7	7.0	7.0	7.0	7.0	7.0	7	7.0	7.0	7.0
8	8.0	8.0	8.0	8.0	8.0	8	8.0	8.0	8.0
9	9.0	9.0	9.0	9.0	9.0	9	9.0	9.0	9.0
10	10.0	10.0	10.0	10.0	10.0	10	10.0	10.0	10.0
11	11.0	11.0	11.0	11.0	11.0	11	11.0	11.0	11.0
12	12.0	12.0	12.0	12.0	12.0	12	12.0	12.0	12.0
13	13.0	13.0	13.0	13.0	13.0	13	13.0	13.0	13.0
14	14.0	14.0	14.0	14.0	14.0	14	14.0	14.0	14.0
15	15.0	15.0	15.0	15.0	15.0	15	15.0	15.0	15.0
16	16.0	16.0	16.0	16.0	16.0	16	16.0	16.0	16.0
17	17.0	17.0	17.0	17.0	17.0	17	17.0	17.0	17.0
18	18.0	18.0	18.0	18.0	18.0	18	18.0	18.0	18.0
19	19.0	19.0	19.0	19.0	19.0	19	19.0	19.0	19.0
20	20.0	20.0	20.0	20.0	20.0	20	20.0	20.0	20.0
21	21.0	21.0	21.0	21.0	21.0	21	21.0	21.0	21.0
22	22.0	22.0	22.0	22.0	22.0	22	22.0	22.0	22.0

WIRE LEGEND				
TYPE	QTY	DESCRIPTION	MANUFACTURER	PART NUMBER
AL	1	ALUMINUM DIGITAL	BECDEN	1000
AL	1	ALUMINUM DIGITAL	BECDEN	1001
AL	1	ALUMINUM DIGITAL	BECDEN	1002
AL	1	ALUMINUM DIGITAL	BECDEN	1003
AL	1	ALUMINUM DIGITAL	BECDEN	1004
AL	1	ALUMINUM DIGITAL	BECDEN	1005
AL	1	ALUMINUM DIGITAL	BECDEN	1006
AL	1	ALUMINUM DIGITAL	BECDEN	1007
AL	1	ALUMINUM DIGITAL	BECDEN	1008
AL	1	ALUMINUM DIGITAL	BECDEN	1009
AL	1	ALUMINUM DIGITAL	BECDEN	1010
AL	1	ALUMINUM DIGITAL	BECDEN	1011
AL	1	ALUMINUM DIGITAL	BECDEN	1012
AL	1	ALUMINUM DIGITAL	BECDEN	1013
AL	1	ALUMINUM DIGITAL	BECDEN	1014
AL	1	ALUMINUM DIGITAL	BECDEN	1015
AL	1	ALUMINUM DIGITAL	BECDEN	1016
AL	1	ALUMINUM DIGITAL	BECDEN	1017
AL	1	ALUMINUM DIGITAL	BECDEN	1018
AL	1	ALUMINUM DIGITAL	BECDEN	1019
AL	1	ALUMINUM DIGITAL	BECDEN	1020

ERB MEMORIAL UNION - ADDITION & RENOVATION
PACKAGE 4

UNIVERSITY OF OREGON
13TH AVENUE & UNIVERSITY STREET

REVISIONS

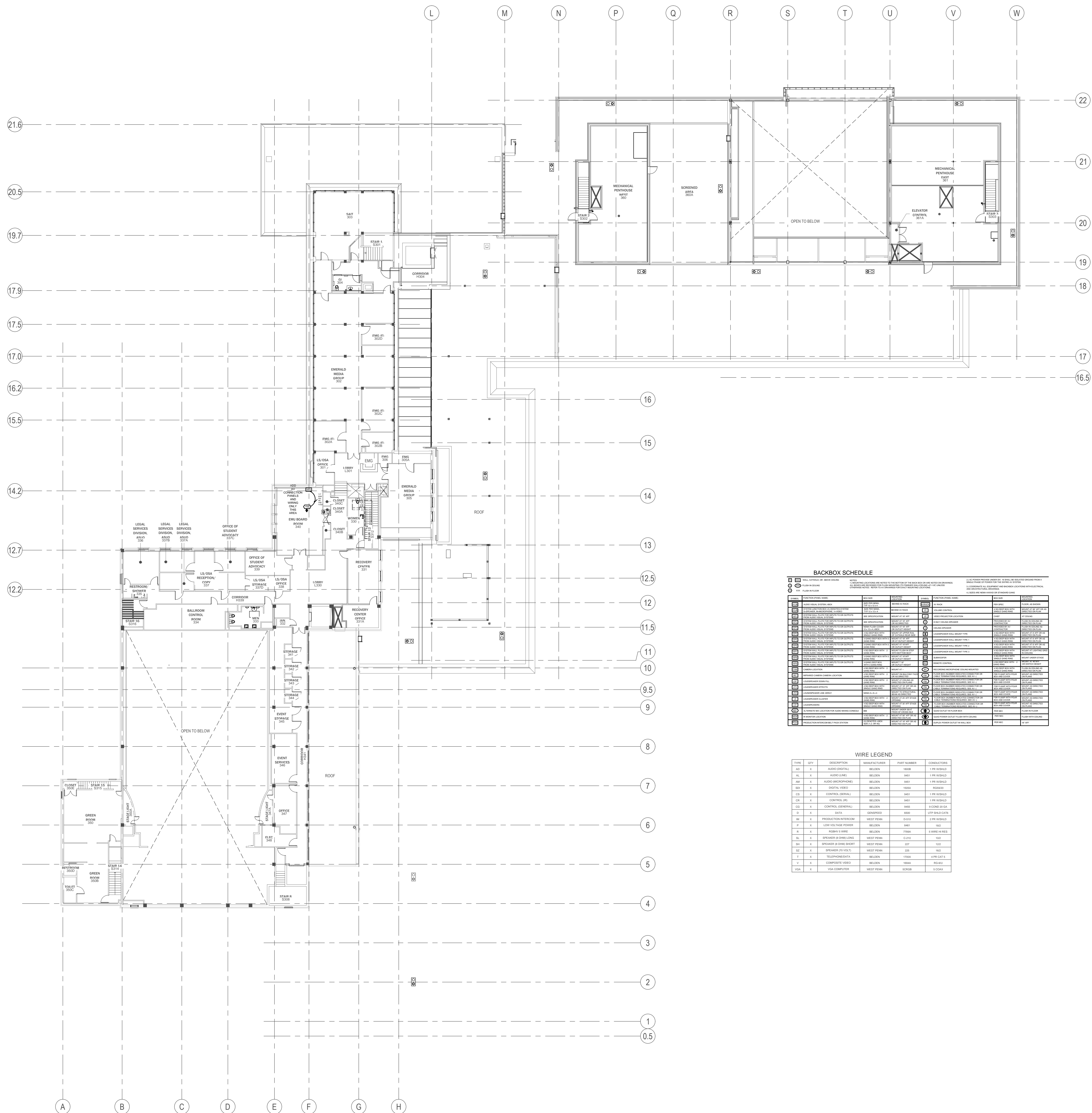
CHECKED BY: 2014.08.01
ISSUE DATE: 11045
PROJECT NO:

AV LEVEL 1

AV101



MULTIFUNCTION AUDITORIUM
QUAD INDICATES 4 20A CIRCUITS

[illegible]

WIRE LEGEND					
TYPE	QTY	DESCRIPTION	MANUFACTURER	PART NUMBER	CONDUCTORS
AD	X	AUDIO (SPEAKERS)	BELEN	9000	1 PR W/SHLD
AM	X	AUDIO (MIC)	BELEN	9001	1 PR W/SHLD
AM	X	AUDIO (MICROPHONE)	BELEN	9001	1 PR W/SHLD
BD	X	DIGITAL VIDEO	BELEN	1001A	850002
CS	X	CENTRAL (SERIAL)	BELEN	9001	1 PR W/SHLD
CS	X	CENTRAL (SERIAL)	BELEN	9001	1 PR W/SHLD
CD	X	CENTRAL (DATA)	GENSIP	6550	5/000 24 GA
CD	X	CENTRAL (DATA)	GENSIP	6550	5/000 24 GA
CM	X	COMPUTER INTERCOM	BELEN	9001	1 PR W/SHLD
P	X	LOW VOLT SPEAK POWER	BELEN	9001	1 PR
R	X	ROBBERY WIRE	BELEN	9001A	8/000 18 W/SH
SL	X	SLIP ON SHIRT AND LONG	WEST POINT	C-270	100
SL	X	SLIP ON SHIRT AND LONG	WEST POINT	271	100
SL	X	SLIP ON SHIRT (V-SHIRT)	WEST POINT	252	100
T	X	TELEPHONE DATA	BELEN	1001A	4 PR 24 GA
T	X	TELEPHONE DATA	BELEN	1001A	4 PR 24 GA
VGA	X	VGA COMPUTER	WEST POINT	8/000 8 GA	5

**ERB MEMORIAL UNION - ADDITION & RENOVATION
PACKAGE 4**

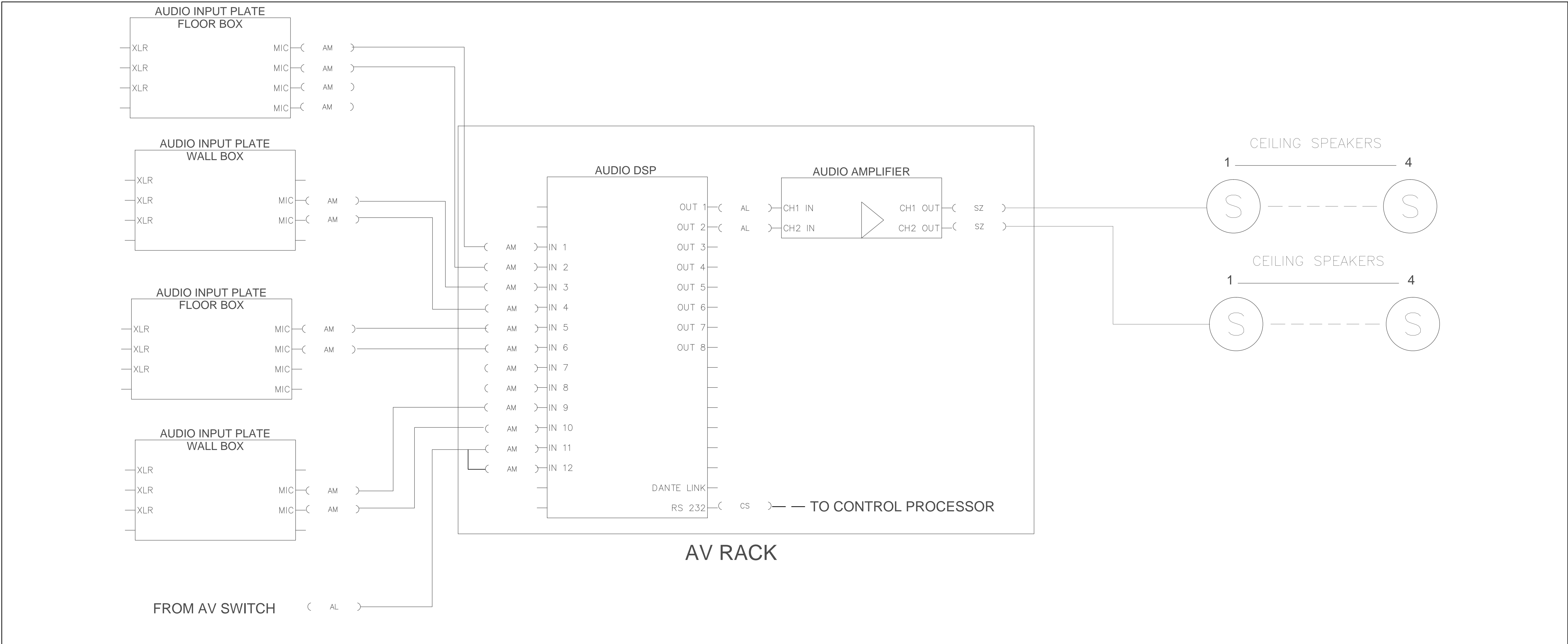
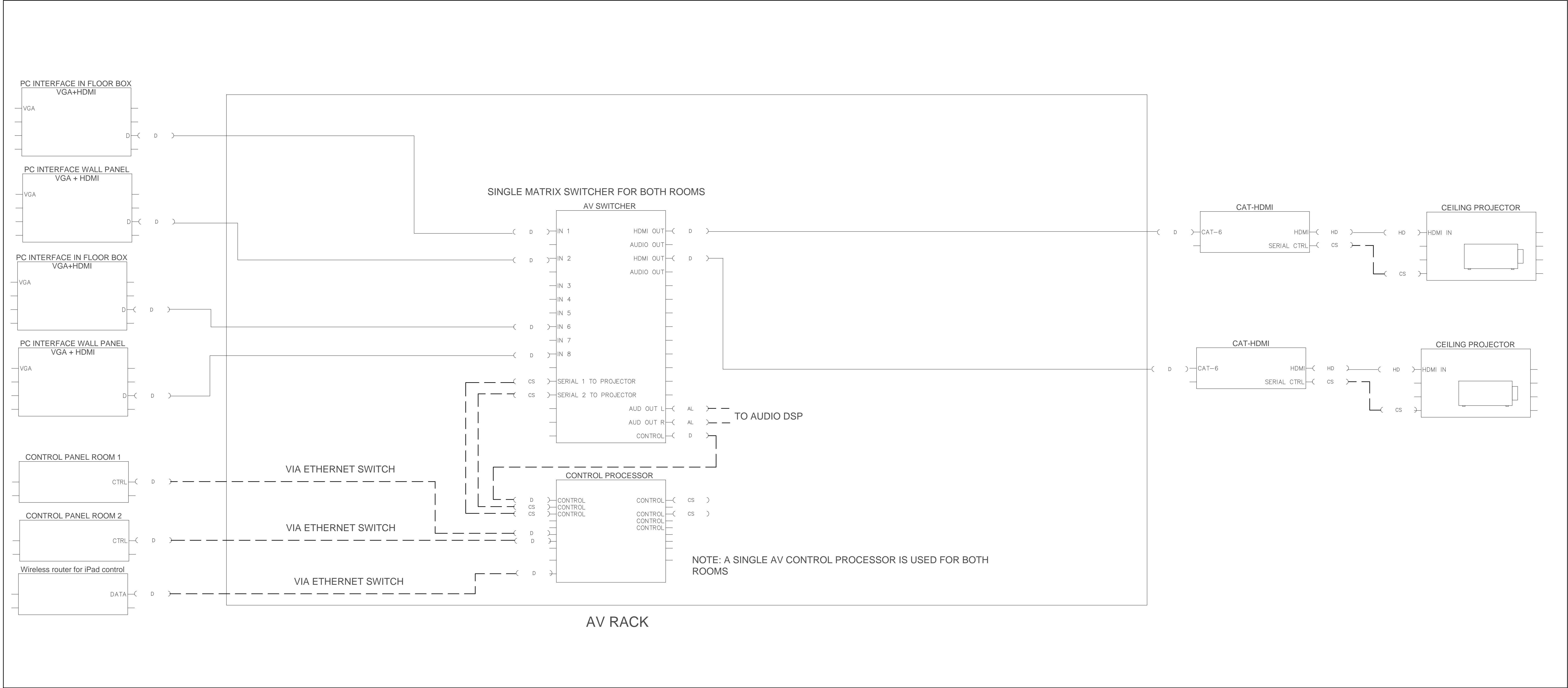
REVISIONS

CHECKED BY: 2014.07.02
ISSUE DATE:
PROJECT NO.: 11045

AV MEZZANINE
AV103

These drawings and their content are the property of SERA Architects Inc. and are to be utilized on this project. Reproduction of any part of this material, without the express written permission of SERA Architects Inc. is prohibited.

8/27/2013 5:28:00 PM



SERA

ARCHITECTURE
URBAN DESIGN + PLANNING
INTERIOR DESIGN

338 NW 5TH AVENUE
PORTLAND OREGON 97209
P: 503.445.7372
F: 503.445.7399
SERAPDX.COM

LISTEN ACOUSTICS
404 NW 10TH AVE
SUITE 200
PORTLAND OR 97209
503-241-5255

ERB MEMORIAL UNION - ADDITION & RENOVATION

PACKAGE 4

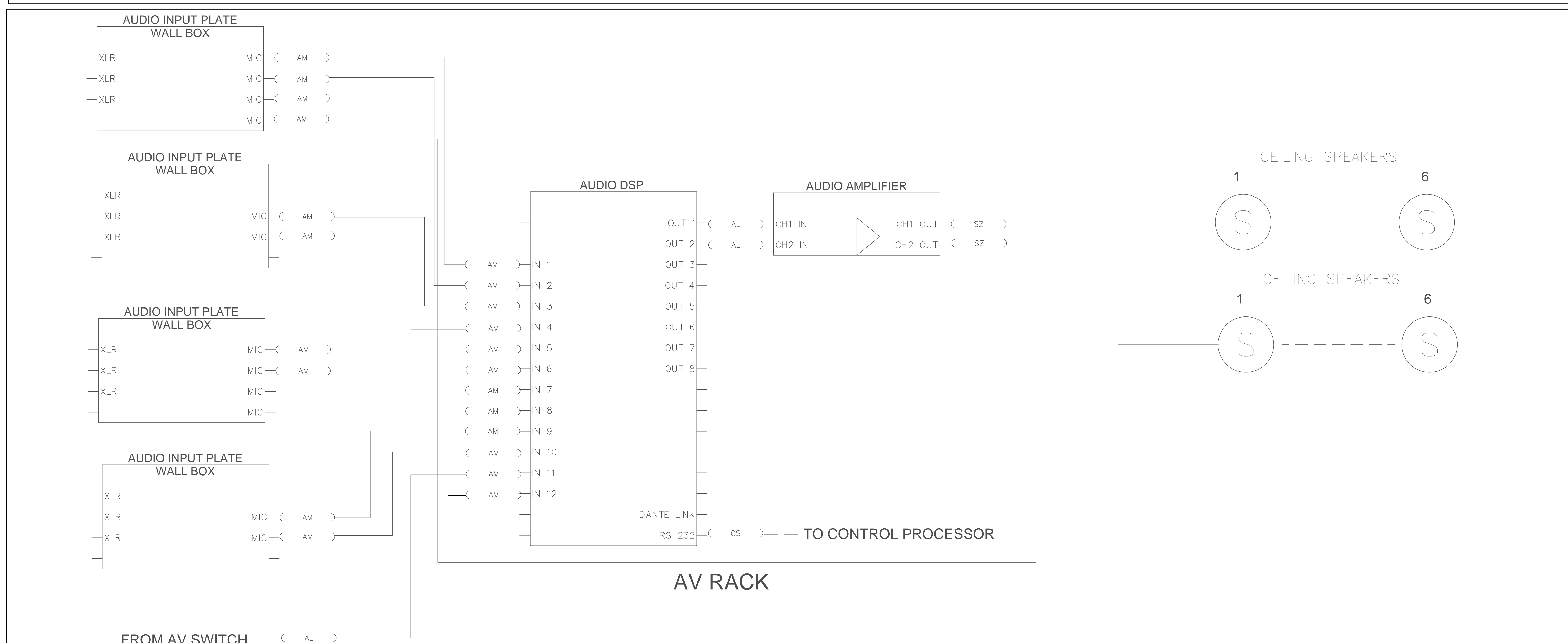
UNIVERSITY OF OREGON
13TH AVENUE & UNIVERSITY STREET

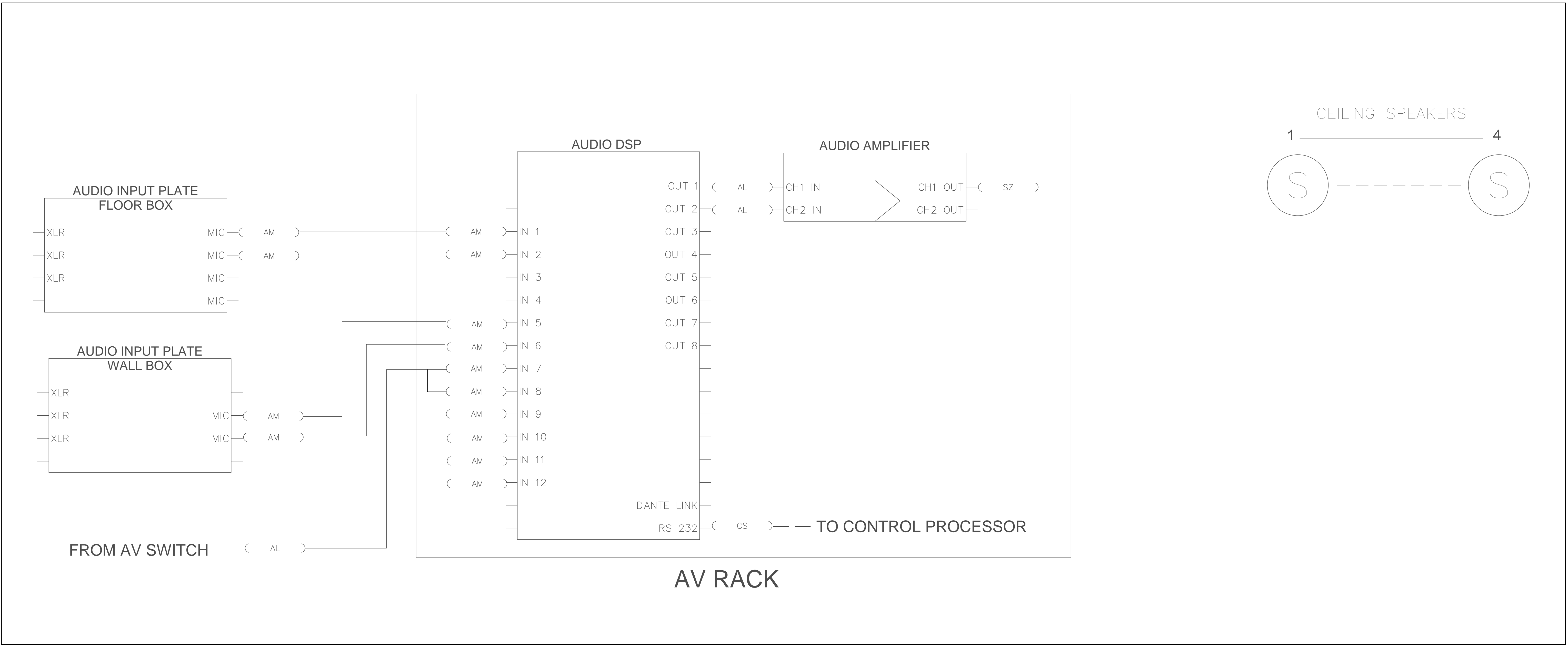
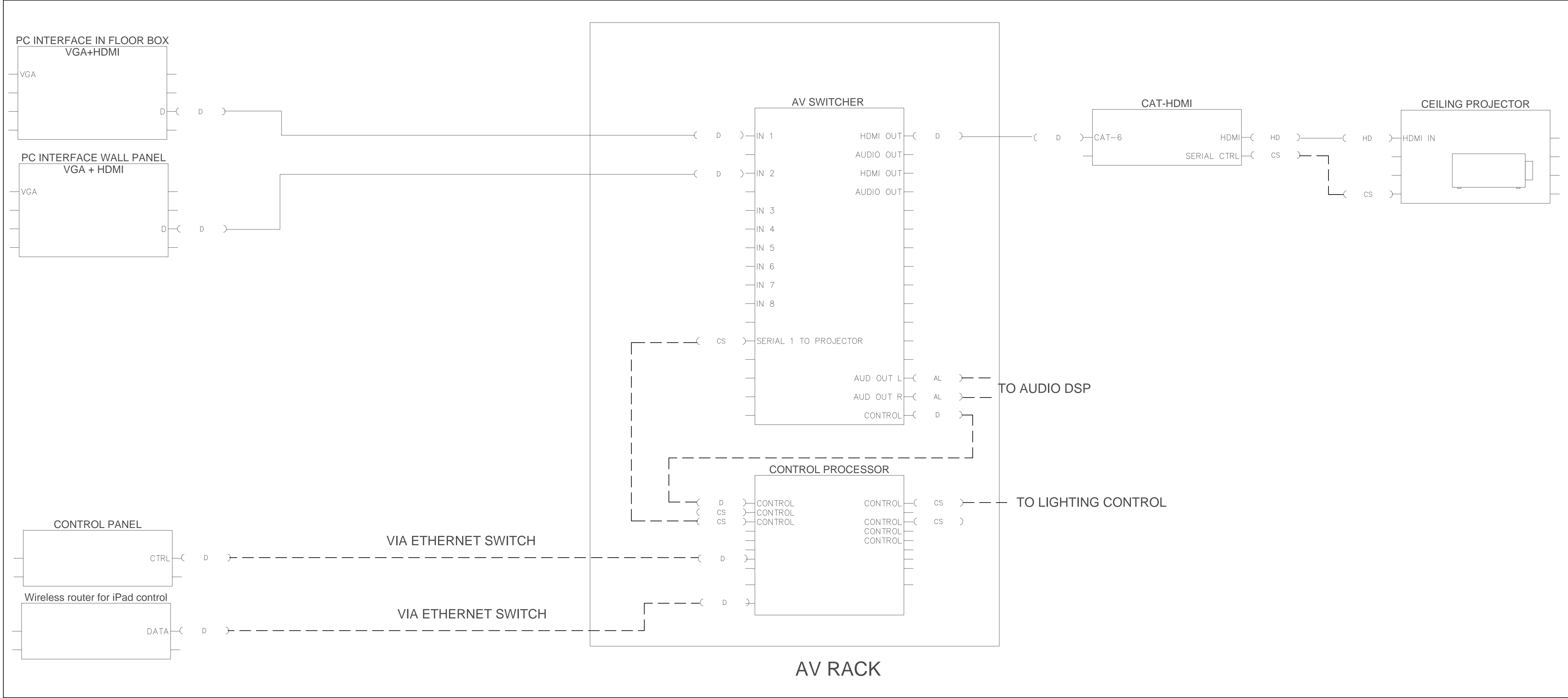
REVISIONS

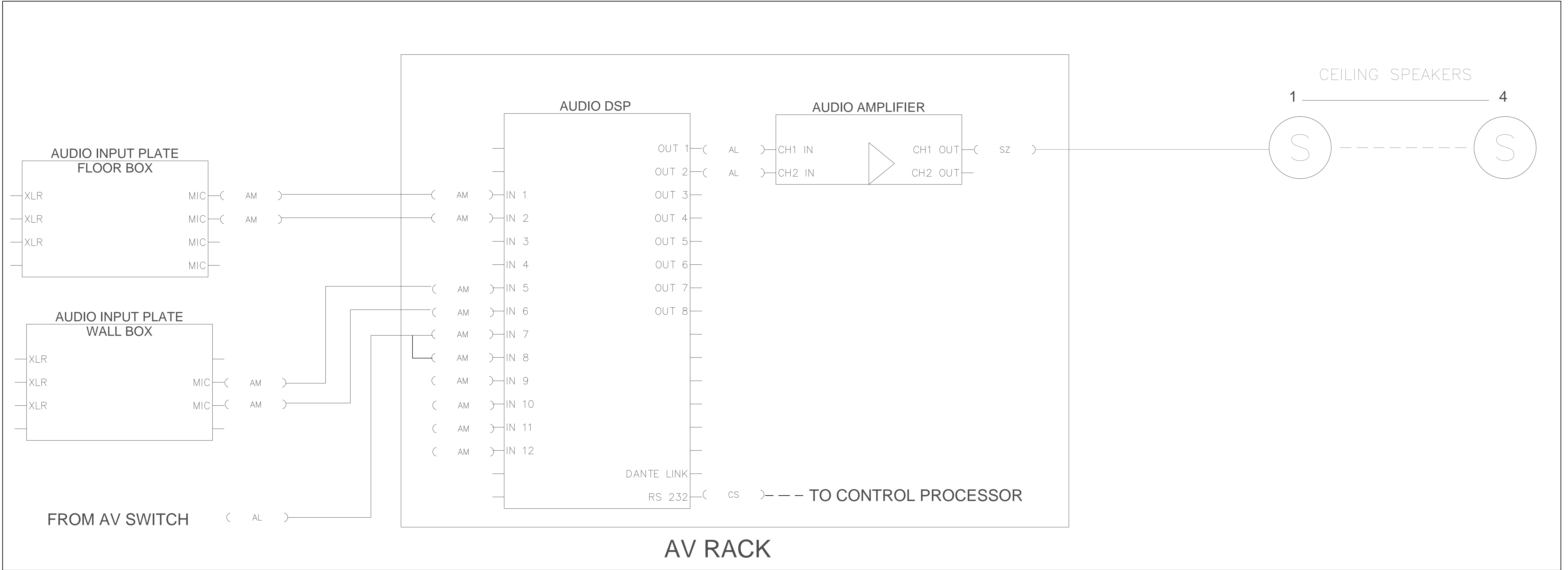
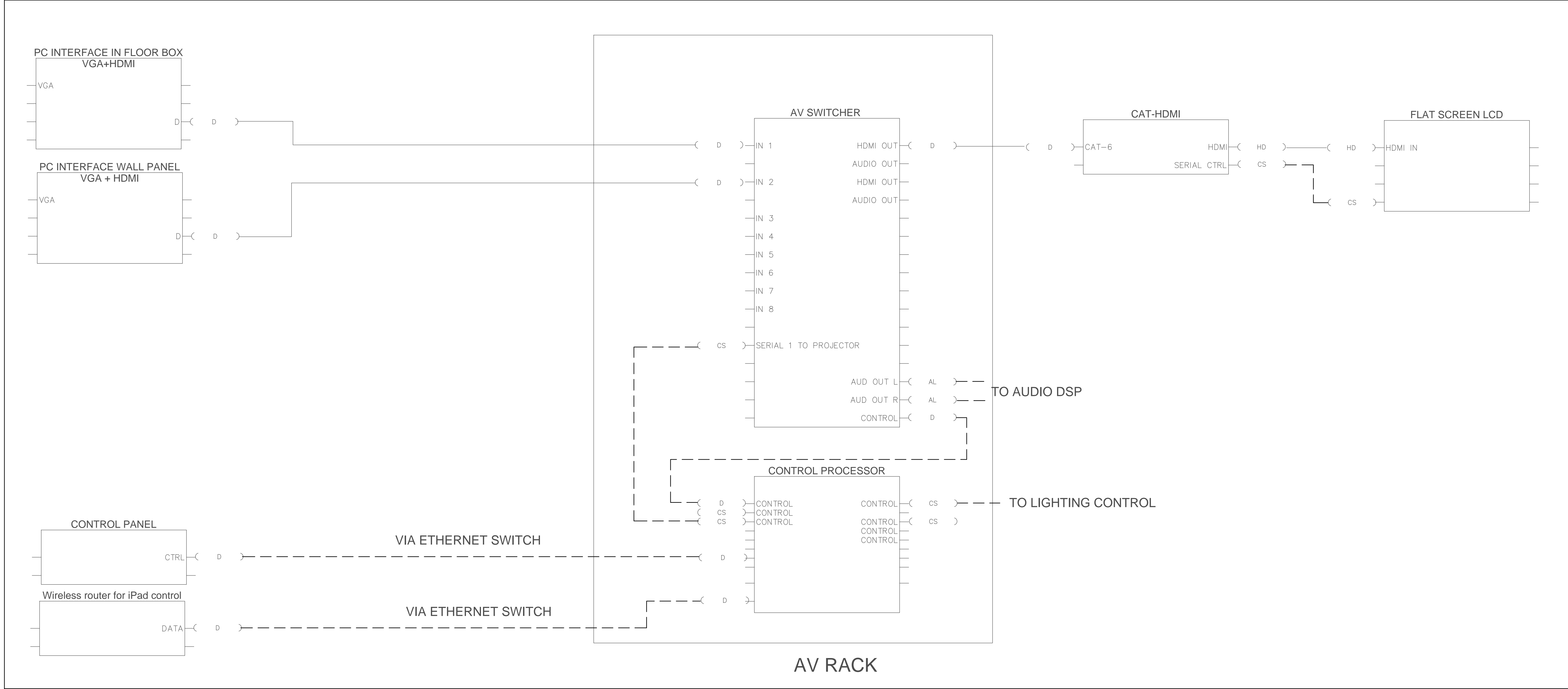
CHECKED BY: 2014.08.01
ISSUE DATE: 11045
PROJECT NO:

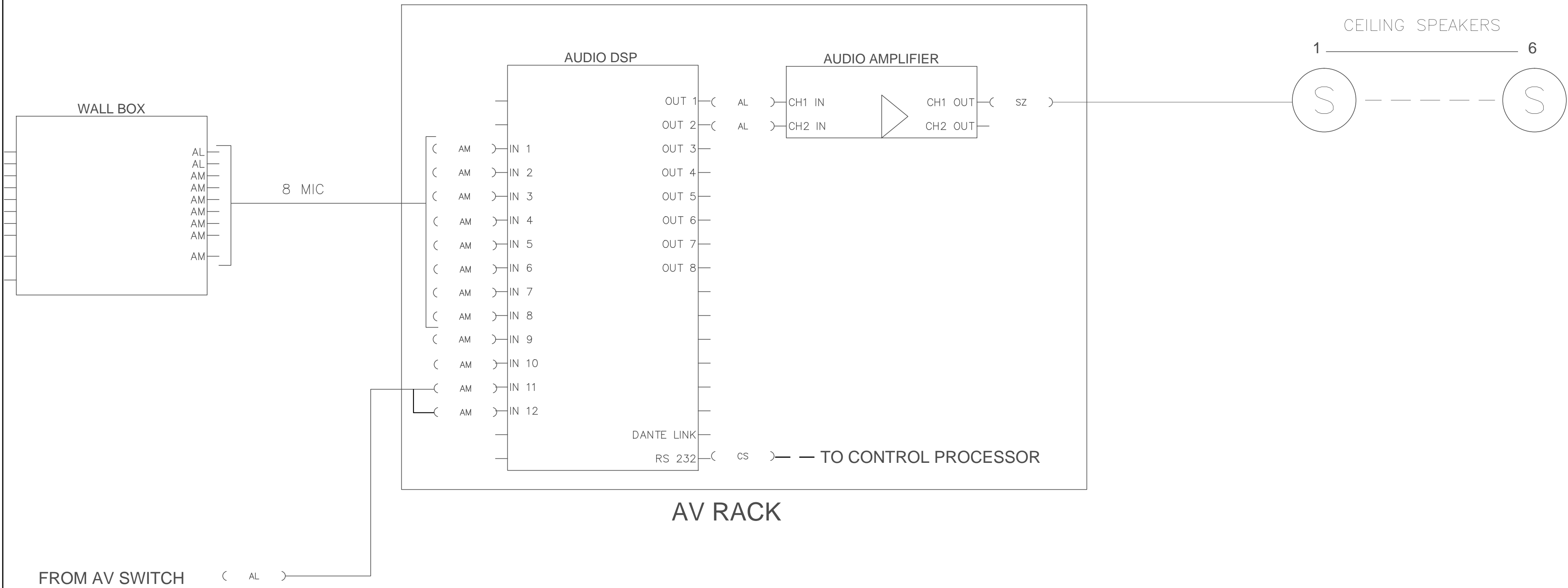
AV MED CONF
COMBINING
AV300

100% CONSTRUCTION DOCUMENTS

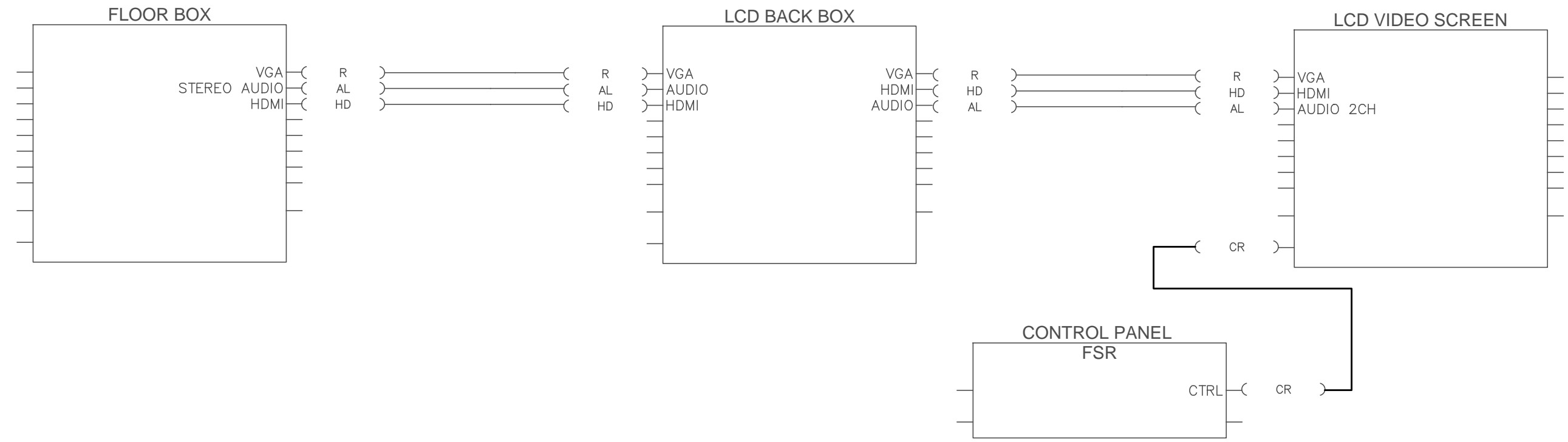




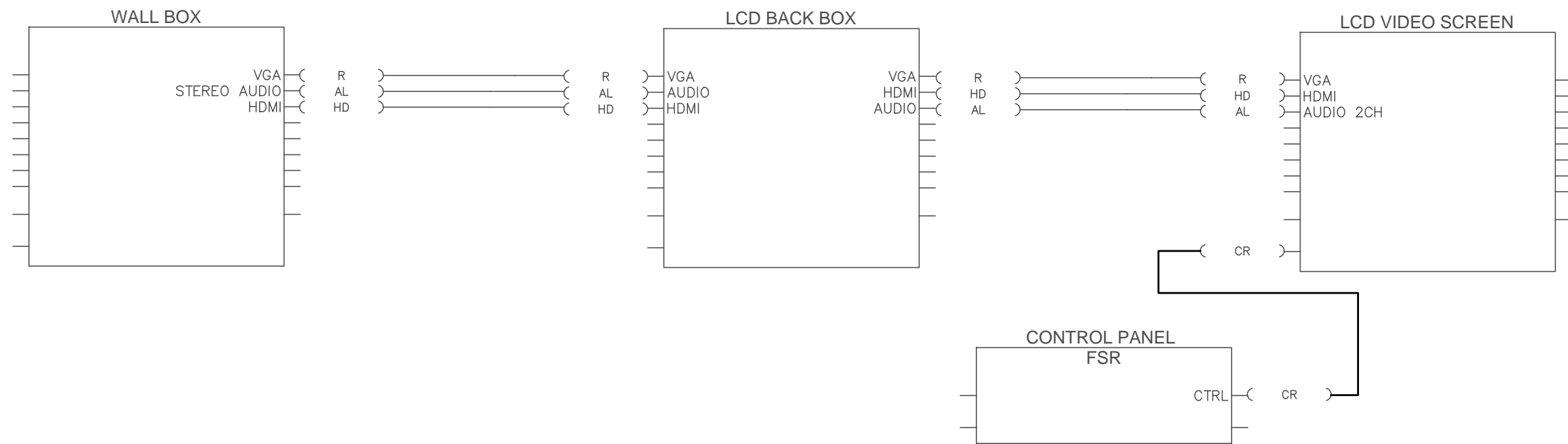




HEARTH AUDIO



SM AND VSM CONF ROOMS



LOUNGE COLLABORATION SYSTEMS

